



CYBER ASSET PLATFORM

Bringing Cyber Asset Data Together Through a Dashboard Solution

ACCESS THE POWER OF DATA IN ONE CONSOLIDATED LOCATION

As companies grow, the availability and management of data play a pivotal role in determining overall cybersecurity posture and ability to protect against cyber threats. ***A consolidated visualization of where assets are located and their stability at any given moment is integral to a company's success in monitoring and reacting to cyber concerns.*** Most dashboarding technologies, especially in large organizations, can consume a lot of data but require specialized skills to create and maintain meaningful and actionable cyber intelligence. In addition, with conventional dashboarding solutions, the likelihood of inefficiencies and poor performance increases as you grow the volume and complexity of data.

Are you getting what you need from your cyber dashboarding solutions?

INTRODUCING THE CYBER ASSET PLATFORM

The ***Cyber Asset Platform*** solution is a dashboard portal specifically engineered to consolidate cyber data across multiple sources, enabling you to visualize cyber asset information using a top-down view of assets across multiple divisions. What differentiates the Cyber Asset Platform from other solutions is the flexibility to ingest variable data from many sources into a consolidated database, enabling unified and consolidated cyber visualizations across different divisions within a company or agency.

Unlike alternatives that offer so-called solutions that are cascaded with data latency and often require manual consolidation of data to get the full picture of your cyber assets, the Cyber Asset Platform integrates your cyber data into a single unified knowledge base. Understanding that Security Management solutions are designed to handle large infrastructures to help your cyber posture, this platform stands out because of its ability to present information from multiple organizations, data centers, and agencies into one drill-down visual dashboard.

The Cyber Asset Platform can leverage data from multiple sources, including platforms, databases, appliances, and other collection points. This flexibility allows for an all-encompassing view for anyone who takes their cyber asset positioning seriously.

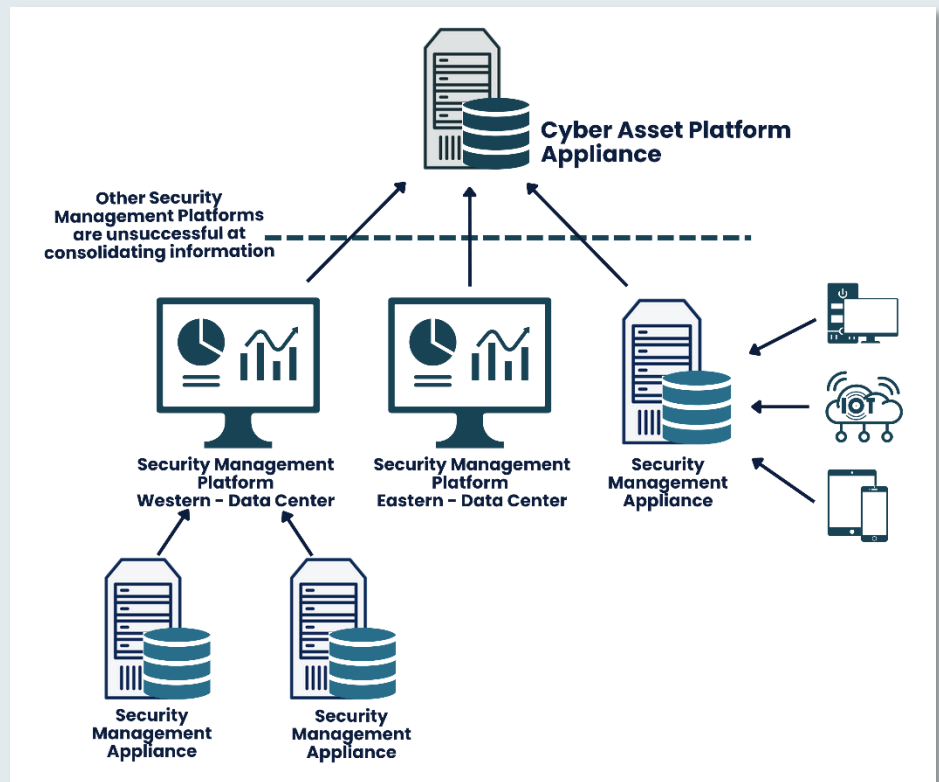


Figure 1 - Lifescale Analytics Cyber Asset Platform Solution



CYBER ASSET PLATFORM

Bringing Cyber Asset Data Together Through a Dashboard Solution

THE TECHNOLOGY

Getting combined reporting from multiple Security Appliances, Devices, and Managers on a single network is impossible. This problem is compounded when there are multiple Security Appliances, Devices, and Managers covering multiple networks. The Cyber Asset Platform is designed to address the 'Top List' of what Leadership, Mid-Level, and Security organizations recognize as the most important data reports based on their assets.

The Solution

- Appliance or Cloud Based
- Provides flexibility that presents a breakdown of data by Location or Key Site
- Allows for Role-Based Security to control access to information
- Viewable from Desktop and Mobile Devices

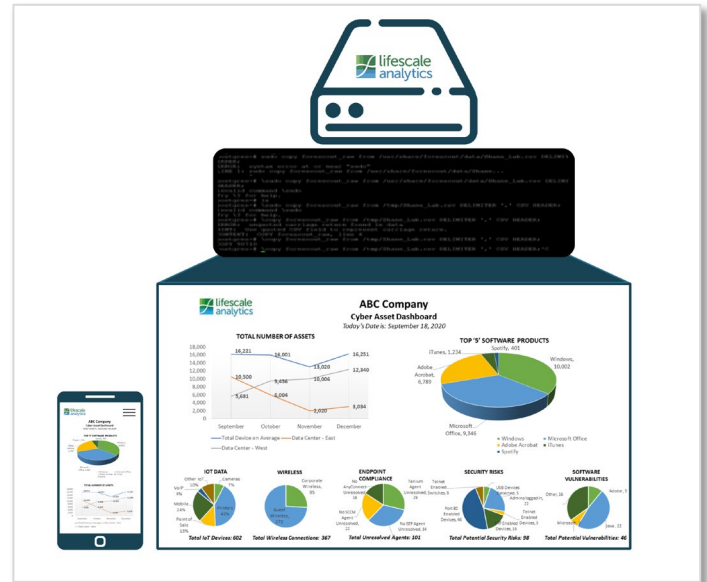


Figure 2 - Lifescale Analytics Cyber Asset Dashboard

BENEFITS THAT WILL ENHANCE YOUR CYBER POSTURE

Reduce Risk

Regular monitoring of Cyber and Asset activities is vital to any Security Organization. A consolidated view will allow you to view cyber activity or vulnerabilities from a single location, putting you in the best position to identify if an occurrence is happening across the entire infrastructure or in an isolated location.

Reduce Cost

Compared to other dashboarding technologies, the Cyber Asset Platform is affordable. This is due to the open-source technology and efficient overall design. The platform's flexibility does not require certified skill sets costing a premium just to get a dashboard operational. The design is fluid, ensuring that the dashboard provides easy access to the most frequently needed monitoring activities right at your fingertips.

Reduce Issue Time to Resolution

Monitoring data from multiple dashboard solutions slows response time, which is critical in establishing a good cybersecurity posture. Having accurate and timely data allows you to address concerns quickly and efficiently. Furthermore, data latency of complex dashboarding technology slows reaction time and could put your organization at risk. The Cyber Asset Platform allows you to identify enterprise-wide risks and vulnerabilities in one location, putting you in the best position to take corrective action.

Improve Baseline for Resource Planning

A comprehensive understanding of an organization's cyber assets is essential in determining the best approach to addressing issues. The Cyber Asset Platform does just that by providing a unified view of what you have across the board. This enables monitoring assets, addressing vulnerabilities, understanding the success of deployments, and addressing inefficiencies in any large infrastructure.